



CERTIFICATE OF ANALYSIS

Powered by Confident Cannabis
1 of 2

Lancaster DHIA

1592 Old Line Rd.
Manheim, PA 17545
forage@lancasterdhia.com
(717) 664-0191
Lic. #: 42-000640

Sample: 230313TRI001.003

Sample Description: Silver Birch
Batch#: Defiant Remedies; Gerald Knepp; LAA0921;
Sample Received: 03/15/2023; Report Created: 03/23/2023;
Sampled By: Client;

D8 CBG 1:2

Concentrates & Extracts, Tincture, Other



2.223 mg/ml

Total THC

0.1204 mg/ml

Total CBD

67.98 mg/ml

Total CBG

97.18 mg/ml

Total Cannabinoids

Cannabinoids


Date Analyzed: 03/22/2023


Complete

Analyte	LOD mg/mL	LOQ mg/mL	Result mg/mL	Result %
THCa	0.01348	0.04495	ND	ND
Δ^9 -THC	0.01348	0.04495	2.223	0.2342
Δ^8 -THC	0.01348	0.04495	26.79	2.822
THCVa	0.01348	0.04495	ND	ND
THCV	0.01348	0.04495	ND	ND
CBDa	0.01348	0.04495	ND	ND
CBD	0.01348	0.04495	0.1204	0.01268
CBDVa	0.01348	0.04495	ND	ND
CBDV	0.01348	0.04495	0.06114	0.006440
CBN	0.01348	0.04495	<LOQ	<LOQ
CBGa	0.01348	0.04495	ND	ND
CBG	0.01348	0.04495	67.98	7.161
CBCa	0.02618	0.08728	ND	ND
CBC	0.01348	0.04495	ND	ND
CBL	0.01348	0.04495	ND	ND
Total			97.18	10.24

1 mL = 0.9493 g

SOP:102, AOAC 2018.11 (Modified); UHPLC-PDA. Total THC = THCa * 0.877 + Δ^9 -THC; Total CBD = CBDa * 0.877 + CBD; Total CBG = CBGa * 0.878 + CBG. Pass/Fail THC criteria, if listed, is in accordance with 86 FR 5596 issued by the USDA for pre-harvest hemp clearance (total THC - uncertainty \leq 0.3% THC). Dry weight percent of cannabinoids, if listed, is calculated using the dried weight determined by the moisture content prior to extraction, indicated as follows (SOP:702; Gravimetry).

TRI-
CHROME
ANALY-
TI-CAL6000 Commerce Parkway Suite I
Mount Laurel, NJ
(856) 316-0600
<http://www.trichomeanalytical.com>
Lic# ISO/IEC 17025:2017 A2LA CERT# 5913.01 // DEA# RT0581098 // NJ HEMP# 34_00077

Kristen Goedde
Lab Manager


Tom Barkley
Technical Manager
Confident Cannabis
All Rights Reserved
support@confidentcannabis.com
(866) 506-5866
www.confidentcannabis.com

ND=Not Detected, NR=Not Reported, LOD=Limit of Detection, LOQ=Limit of Quantitation. Action levels reported for contaminants are in accordance with N.J.S.A. 24:61-19 (CRC Resolution 2021-9) issued by the New Jersey Cannabis Regulatory Commission. Values reported relate only to the product tested and batched under the batch number identified above. Trichome Analytical makes no claims as to the efficacy, safety, or other risks associated with any detected or non-detected level of any compounds reported herein. All analytical work is performed using validated methods and in accordance with state and/or federal guidelines. This certificate may only be reproduced in full.



CERTIFICATE OF ANALYSIS

Lancaster DHIA

1592 Old Line Rd.
Manheim, PA 17545
forage@lancasterdhia.com
(717) 664-0191
Lic. #: 42-000640

Sample: 230313TRI001.003

Sample Description: Silver Birch
Batch#: Defiant Remedies; Gerald Knepp; LAA0921;
Sample Received: 03/15/2023; Report Created: 03/23/2023;
Sampled By: Client;

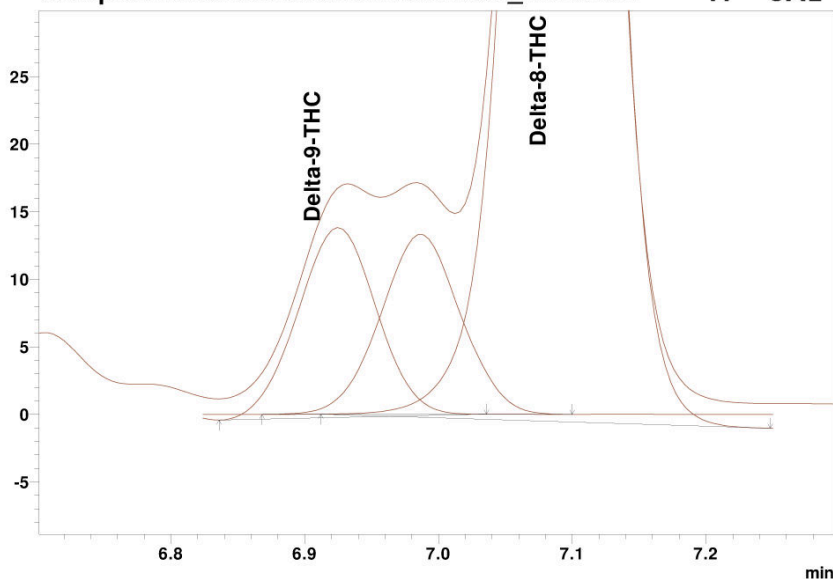
D8 CBG 1:2

Concentrates & Extracts, Tincture, Other



Cannabinoids supporting information
THC Chromatogram
Method: UHPLC-PDA SOP.102
Sample Filename: 230321 TRI002.002_D8D9.lcd

**TRI—
CHOME
ANALY—
TI—CAL**



**TRI—
CHOME
ANALY—
TI—CAL**

6000 Commerce Parkway Suite I
Mount Laurel, NJ
(856) 316-0600
<http://www.trichomeanalytical.com>
Lic# ISO/IEC 17025:2017 A2LA CERT# 5913.01 // DEA# RT0581098 // NJ HEMP# 34_00077

Kristen Goedde
Lab Manager

Tom Barkley
Technical Manager

Confident Cannabis
All Rights Reserved
support@confidentcannabis.com
(866) 506-5866
www.confidentcannabis.com



ND=Not Detected, NR=Not Reported, LOD=Limit of Detection, LOQ=Limit of Quantitation. Action levels reported for contaminants are in accordance with N.J.S.A. 24:61-19 (CRC Resolution 2021-9) issued by the New Jersey Cannabis Regulatory Commission. Values reported relate only to the product tested and batched under the batch number identified above. Trichome Analytical makes no claims as to the efficacy, safety, or other risks associated with any detected or non-detected level of any compounds reported herein. All analytical work is performed using validated methods and in accordance with state and/or federal guidelines. This certificate may only be reproduced in full.